

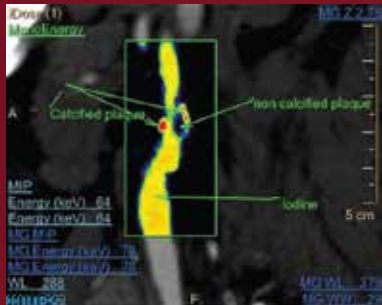


IQON Spectral CT

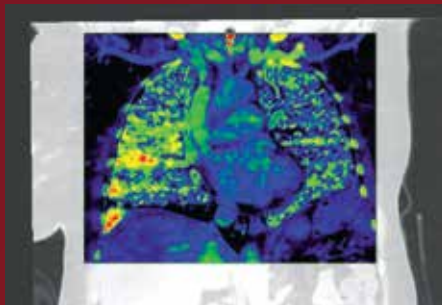
Color **informs**. Color **quantifies**. Color **clarifies**.

- IQon – the world’s first detector based spectral CT.
- This CT will allow you to integrate spectral acquisition into your daily workflow, for all patients.
- With spectral, CT will move from giving only information about anatomy and location of pathology – to giving you information about composition, structure and function of any anatomy and pathology.
- It all comes down to the new, unique detector technology. The detector itself is actually two detectors on top of each other. The detector is built from two different materials. In the top layer, which is made of yttrium, the low energy photons will be absorbed, whereas the high energy photons will penetrate through to the bottom layer, which is a traditional GOS-detector.

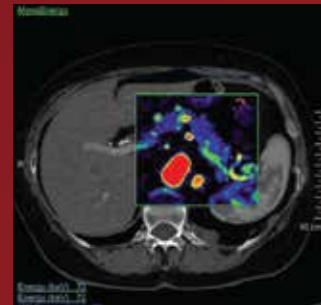
innovation  you



CTA carotid with Spectral Results MonoE



Chest PE with spectral results



CTA abdomen with spectral results of the pancreas



Color Quantification

Add spectral resolution to image quality enables the quantification and characterization of tissue and critical structures



Philips Egypt – Healthcare
City Stars, Capital 8, 12th Floor,
Nasr City, Cairo, Egypt
Postal Code: 11771
Tel. : + 202 2480 1450
Fax: + 202 2480 1459

Healthcare Customer Care

19742

www.philips.com.eg

PHILIPS